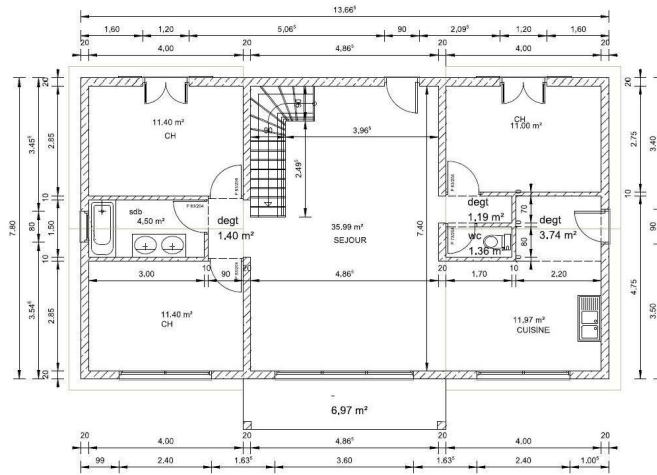


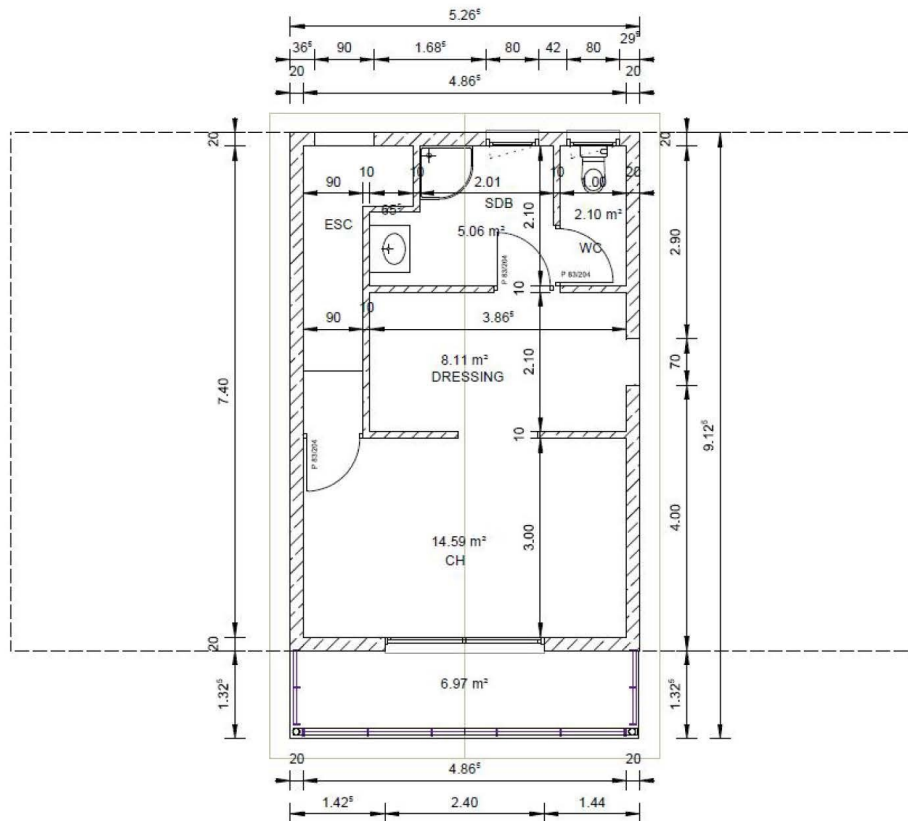
Prefab villa of Reunion

Product Plan

RDC



First Floor Plan



Second Floor Plan

3D Model



Material list

LIGHT STEEL VILLA			
General information			
NAME	FLOOR	SIZE	
light steel villa	two floors	13660mm*7800mm (1 family)	
Light steel villa Total area: 145.55 m ²			
Materials list			
II	Ground Floor		
2	ceramic tile	m ²	600mm*600mm,beige
III	Second Floor		
1	Rubber insulator + OSB board + Waterproof pad +wooden floor	m ²	

2	Rubber insulator + fiber cement board + ceramic tile (bathroom)	m ²	
IV	Steel structure		
1	Hot-formed Aluminum coating steel	kg	Q235,Z275galvanized,G340
2	Accessories of steel structure	m ²	SGC440,Z275
V	External wall system		
1	Fiber cement board (ground floor flat, first floor Wood grain)	m ²	2440*1220*12mm,3000mm*200mm*12mm
2	Vapor barrier	m ²	
3	OSB board	m ²	2440*1220*12mm
4	Wall fiber glass insulation	m ²	75mm, 16kg/m ³
VI	Internal wall system		
1	Gypsum board	m ²	2400mm*1200mm*12mm
2	Fiber cement board (kitchen and bathroom)	m ²	2440*1220*10mm
VII	Roof & Ceiling system		
1	Steel roof	m ²	gray color
2	steel purlin	m ²	galvanized
3	Waterproof material	m ²	1.2mm
4	OSB board	m ²	thickness:12mm
5	Roof fiber glass insulation	m ²	100mm, 16kg/m ³
6	Gypsum board for ceiling	m ²	2400mm*1200mm*10mm
7	PVC ceiling for outside porches	m ²	
8	PVC gutter system	set	
VIII	Doors and windows		
1	Exterior safety door	sets	900mm*2100mm
2	Interior door	sets	830mm*2040mm
3	Aluminum double glass sliding door	set	2400mm*2100mm,gray
4	Aluminum double glass sliding window	sets	1200*2400mm,gray
5	Aluminum double glass sliding door+ electrical shutter	sets	3600mm*2100mm,gray
6	Aluminum double glass sliding door + manual shutter	sets	1200*2100mm,gray
7	open double glass window	set	800mm*800mm,gray
8	Aluminum double glass hang window	set	900mm*900mm,gray
9	Aluminum double glass hang window	set	700mm*700mm,gray
IX	Electrical and water system		
1	Water supply pipe+ electrical	set	
X	Bathroom		
1	Toilet	sets	
2	Tub + faucet	set	
3	Basin + faucet	sets	

Installation Procedure

Steel base





Set the Ground floor wall

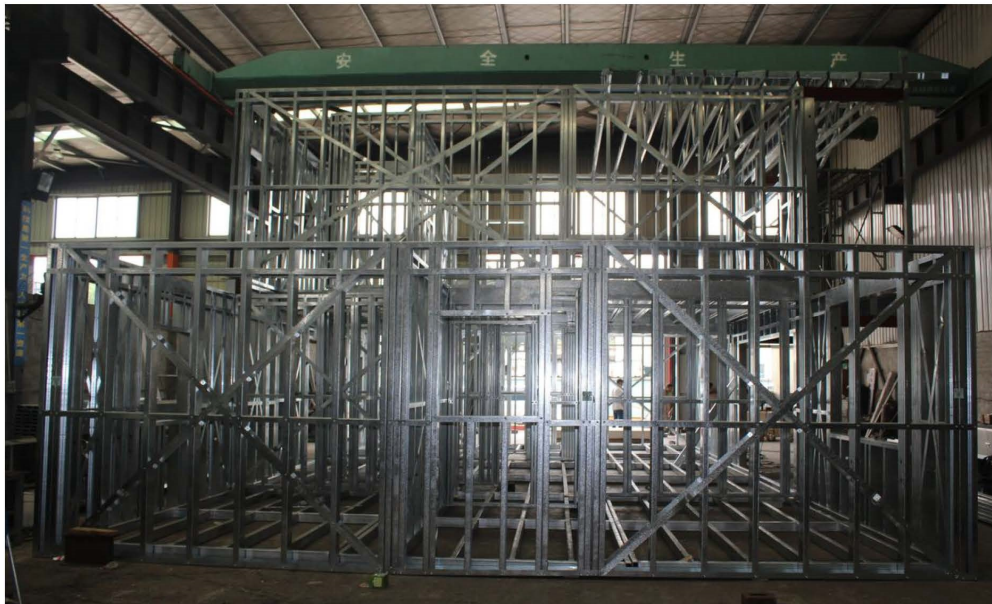


Set the ground floor wall





Set the second wall



Set the second floor Roof



Set the stair



loading structure:





Installation of destination





Outside looking



Inside looking



